



STRETCH FORMING CORPORATION

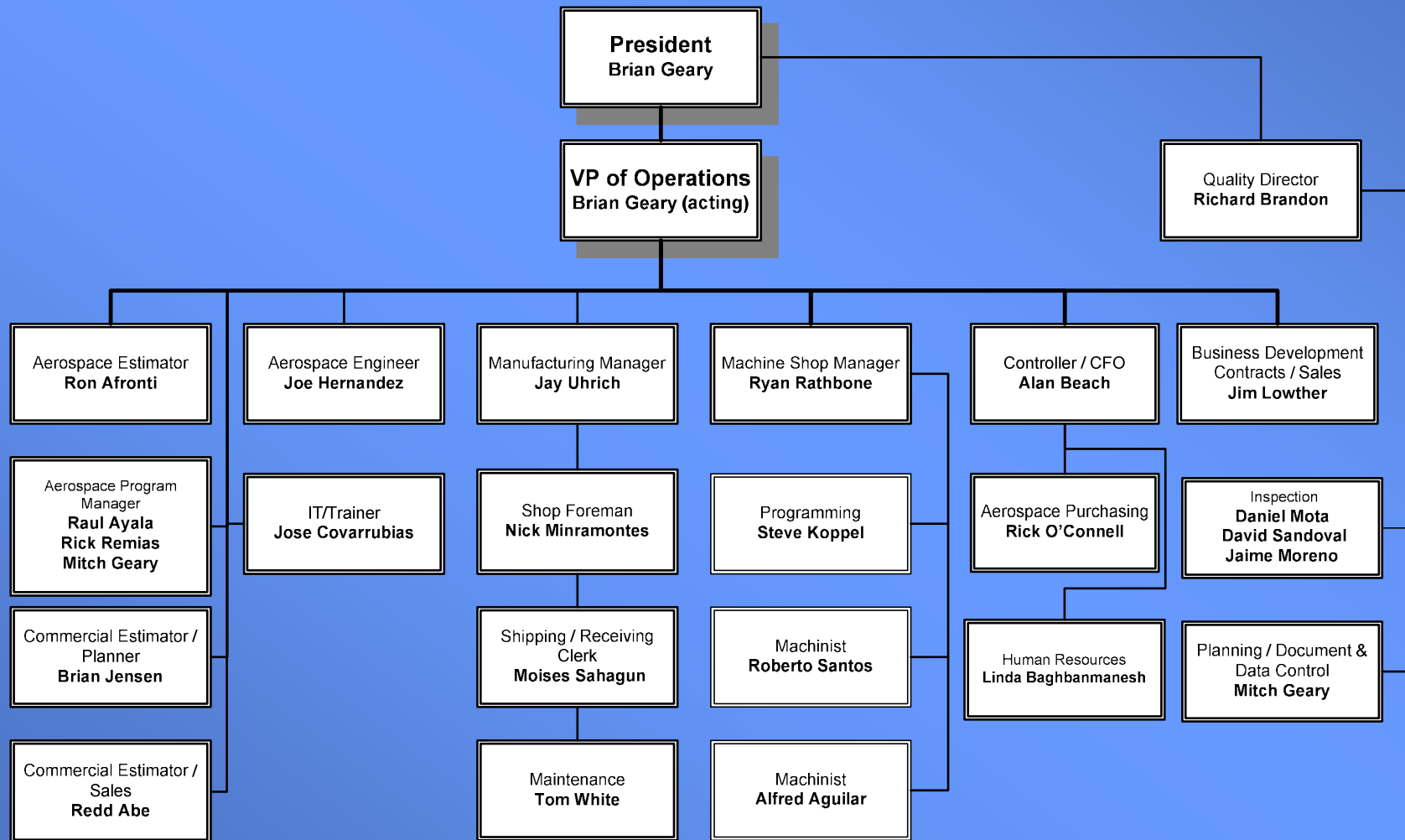
Metal Forming, Machining, Fabrication, tooling, Assembly....*It's What We Do*

Company Overview

- SFC celebrates 43 years of manufacturing excellence.
- The pioneer of metal forming in Southern California.
- Most skilled work team in the business.
 - Senior shop and machine operators average 25 years of experience
 - Management team with average of 20 years experience.
- Fully trained and certified personnel dedicated to ultimate customer satisfaction.
- Providing turn-key solutions for your part needs.



Organizational structure



SFC Leading the way in advanced Techniques

- Engineering Design-CATIA 5 V19
- Programming
- Metal Forming
- Fabrication
- Machining
- Processing
- Kitting
- Assembly



Customer focus

- SFC partners with each Customer.
 - Highest part quality.
 - Most efficient manufacturing methods.
 - Best economical price.
 - Unsurpassed service.



Flexibility to meet customer needs



Flexibility to meet customer needs

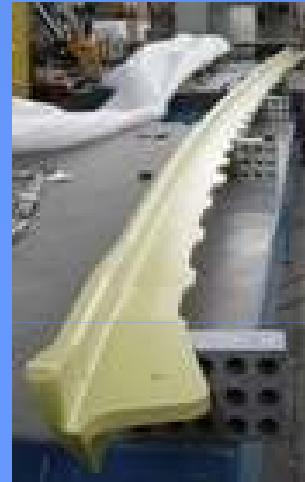
- Internal:
 - Largest collection of privately held forming equipment world wide.
 - Acquired 10 CNC milling and turning work centers.
 - Long term plan includes on site heat treat.
- External:
 - Strategic teaming partners in place for value added services:
 - Chemical Milling
 - Thermal Processing
 - Surface Processing
- Supplier management systems ensure performance to program milestones.
 - Strong teaming partners are monitored for consistency in performance.

Ability and Versatility in a Global Market

- Fuselage skins
- Failsafe straps
- Retainer seals



- Chords
- Beams
- Doublers
- Bulkhead frames



- Leading edges
- Longerons
- Web Chords
- Spars
- Angles
- Stiffeners
- Extruded Frame



Quality

- AS 9100 Certified.
- ISO 9001:2000 Certified.



Certificate No. 4101 (2 Copies)
11/04/2009 through 11/03/2012

Certificate of Registration

This is to certify that the Quality Management System of



26900 Jefferson Avenue, Murrieta, California 92562


Has been assessed by **EAGLE Registrations Inc.** and conforms with the following standard:

ISO 9001:2000 with AS9100:2004 Rev B

This assessment was performed in accordance with the requirements of AS9104A. EAGLE Registrations Inc. is accredited under the aerospace Registrar Management Program

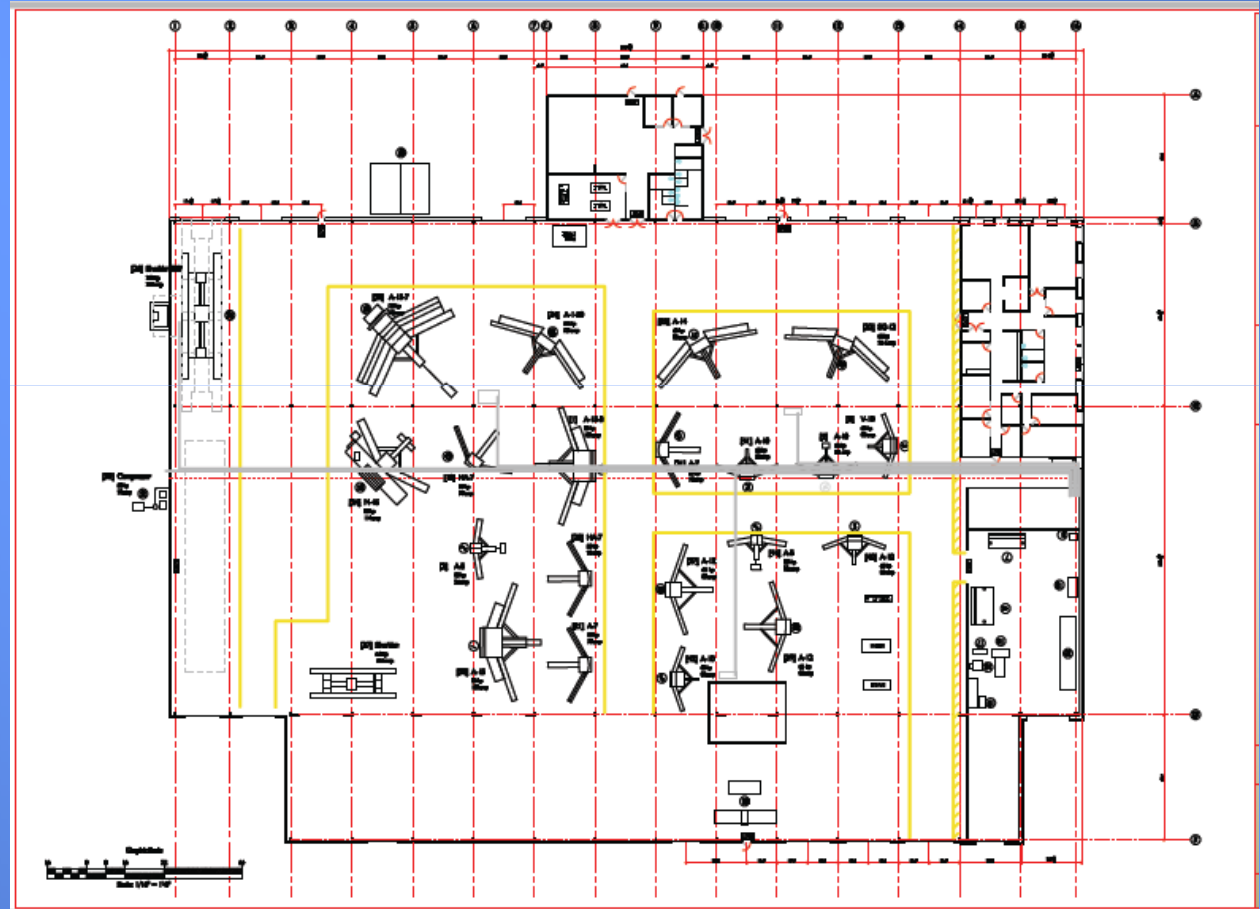
Scope of Registration

Metal Forming, Fabrication and Tooling for the Aerospace, Commercial and Architectural Industries.


Operations Director

SFC Facility

- Lean practices for improved productivity.
- Rationalized work flow reduces movement of in process work between centers.



SFC Purchases Machining Capability

- 10 Work Centers
- CMM measurement equipment
- Staffing includes
 - Programmers
 - Operators
 - Inspectors



Fadal



Fadal



Viper

Equipment Capability

- Stretch capability to 750 tons.
 - Maximum skin size 72" x 360"
 - Maximum extrusion to 420"
- Machining capability to 200" x 90" x 39
- The most complete and comprehensive inventory of equipment available.



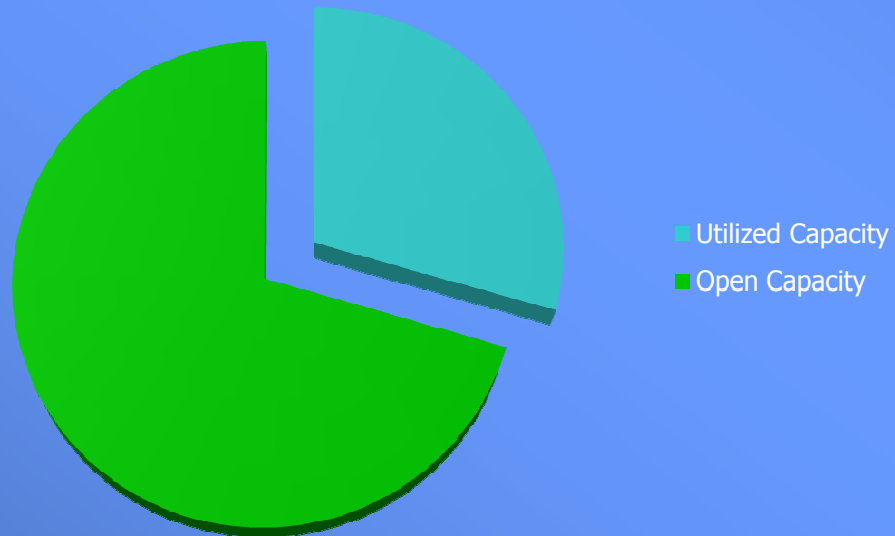
Sheridan Skin Press



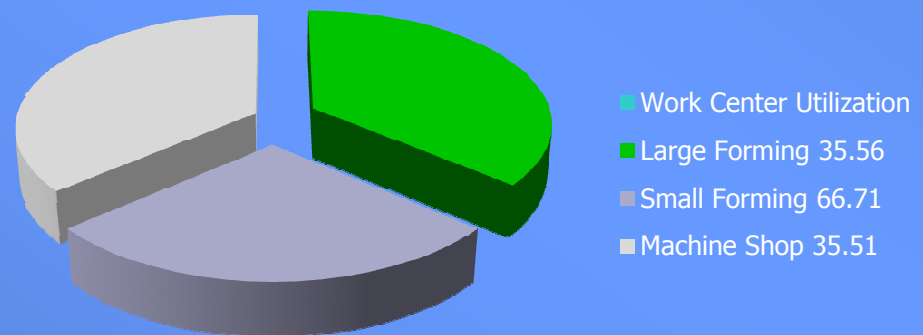
Hufford A-15

Capacity

Total Capacity and Utilization



Work Center Make-up



Equipment

Skin Presses

- Sheridan Skin Press 750 Tons
- Sheridan Skin Press 300 Tons
- Sheridan Skin Press 200 Tons



Equipment

Extrusion/Skin Presses

- Sheridan Stretch Press-LC2400
- Sheridan Stretch Press-250
- Hufford Model 60
- Hufford Model 46



Equipment

Extrusion Presses

- 4 each Hufford A-15 350 Tons
- L&F A-150 350 Tons
- 4 each Hufford A-12 90 Tons
- 4 each Hufford A-7 40 Tons
- 4 each Hufford A-10 17 Tons
- 4 each Hufford A-90 120 Tons
- 5 each Versa V-10 24 Tons
- 2 each Versa V-7 25 Tons



Equipment

Precision CNC Milling

- Viper B-5000 5 BC 5 axis 200 x 90.5 x 39
- 2 each Fadal VMC 4020 3 axis 40 x 20 x 30
- 2 each Fadal VMC 6030 4 axis 60 x 30 x 30
- Akira Seiki VMC 5222 3 axis 50 x 20 x 20
- Mitsubishi Horizontal 4 axis 25 x 20 x 30
- Femco FV-40 4 axis 40 x 30 x 35

Precision CNC Turning

- Yama Seiki GS-200 2 axis 15 x 23
- Euro Tech 2 axis 8 x 20 x 10

Quality Support tooling

- Brown & Sharpe CMM 80 x 60 x 40
- Laser Tracker with A.D.M
- Faro Arm
- Laser Scanner



Equipment

Sheet Metal

- Various pneumatic Shrinker/Stretcher kicker
- Niagara 12' 200 ton
- Armada CNC shear 16' 600 ton
- Johnson punch press 60 ton
- Armada press brake 12' 100 ton
- Cincinnati press brake 12' 100 ton
- Armada press brake 12' 80 ton



Equipment

Specialty Forming

- 24' Roll Former
- 2 each 6" diameter Pines Bender
- 2 each 8" diameter Wallace Bender



SFC, the last piece of your puzzle

- Experience
- Structure
- Technology
- Focus
- Flexibility
- Versatility
- Quality
- Facilities
- Equipment





It's What we do

Corporate Office

804 South Redlands Ave.

Perris, CA. 92570

951-443-0911

Toll free: 888-711-1911

Stretchformingcorp.com