



Commercial

Transportation,
Utility and Recreational
Applications



*Metal Forming
Fabrication
Tooling
Assembly*





TRANSPORTATION

BUSES • TRAINS • RV'S • CAMPERS

Stretch Forming Corporation (**SFC**) began in business over 40 years ago offering precision metal forming and fabrication all done in-house. We excel in the stretch forming process. This method produces no surface marring, perpendicularity of surfaces is assured, there is little or no distortion, excellent repeatability of parts and consistency of tolerances from part to part is maintained. Also, you benefit from a low scrap rate, low

price per part in quantity runs and curving of long lengths. No one can match our vast experience and success. At **SFC** our work force is our most important asset. Over the years our staff has successfully completed thousands of projects with the expertise that only experience and talent can achieve. When looking for the best supplier look no farther than Stretch Forming Corporation.

Our Processes Include

- Stretch Forming
- Stretch Draw Forming
- Skin & Hydro Forming
- Shear and Brake
- Radial Draw Forming
- Ring Rolling
- Roll Forming
- Compression Bending
- Check and Straighten
- Heat Treating

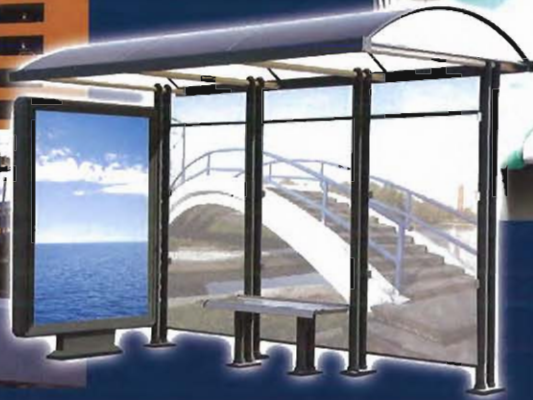
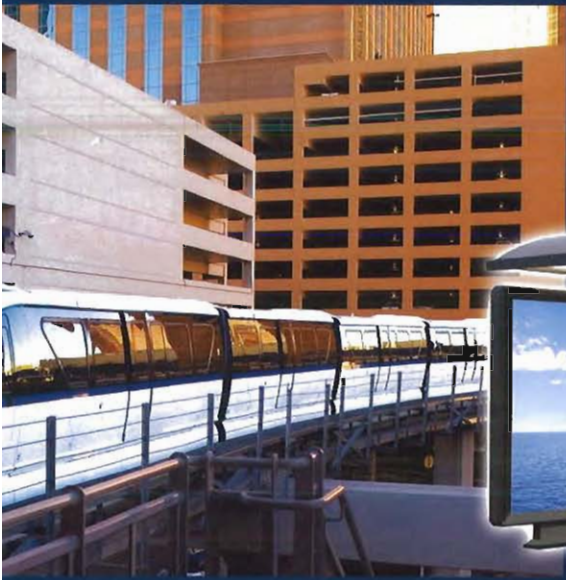
Metals We Fabricate Include

- Aluminum Alloys
- Stainless Steel
- Carbon Steel
- Titanium
- Nickel
- Copper
- Brass

BOATS • BUS STOP ENCLOSURES • RAILINGS



UTILITY



SHUTTLE BUSES • COMMERCIAL TRUCKS

Tooling

SFC offers tooling done in-house. This helps to lower costs and speed up production time.

Tooling Includes

- Skin Extrusion Dies
- Form Dies
- Check Fixtures
- Router Tools
- Drill Fixtures
- Chem-mil tools

Fabrication and Assembly

SFC offers fabrication and assembly in-house. We can handle all of your fabrication needs from single component parts to large, complex assemblies. We have the skills and capabilities including welding, cutting, shaping, CNC punching and hand forming to produce high quality, close tolerance finished assemblies.

In-House CAD Design

SFC is well versed and uses

- Auto Cad 2005
- Mechanical Desktop 2005
- Solid Works 2004
- Master CAM V9.0.

File Formats Includes

- DWG
- DXF
- STEP
- ACIS
- IGES
- MC9
- SLD and PRT.

Stretch Forming Corp. Offers

The employees of **SFC** stress quality work in every aspect of each project and can offer you...

- Customer Satisfaction
- Product Excellence
- Delivery on Time and Within Budget
- Cost Effective Solutions
- Over 40 years of Experience

SIGNAGE • TENTS/FABRIC COVERED STRUCTURES

RECREATION



EQUIPMENT LIST

Skin Presses

Sheridan Skin Press- 750 tons — 72" x 420" Sheet
Sheridan Skin Press- 300 tons — 84" x 144" Sheet
Sheridan Skin Press- 200 tons — 60" x 312" Sheet

Extrusion Presses

Hufford A-15- 350 Tons 45'
Hufford A-15- 350 Tons 30'
L&F A-150- 350 Tons
Hufford Model 97- 325 Tons
Hufford Model 46- 300 Tons
4 each Hufford A-12's- 40 to 90 tons
4 each Hufford A-7's- 25 to 40 tons
4 each Hufford A-10's- 17 tons
4 each Hufford A-90- 120 tons
5 each Versa V-10's — 24 tons
2 each Versa V-7 (25 ton)

Extrusion/Skin Presses

Sheridan Stretch Press- LC 2400
(24" dia. Extrusion Jaws) 372" length
Sheridan Stretch Press- 250
(13" dia. Extrusion Jaws) 360" length
Hufford Model 60- 1000 Tons
Hufford Model 46- 300 Tons

Sheet Metal

Shrinker/stretchers kicker and pneumatic various
Niagara 12' - 200 ton
Cnc shear (amada) 16', 600 ton
Shear (niagara) 16', 500 ton
Punch press obi 60 ton johnson
Cnc Press Brake rg100 100 ton Amada
Cnc Press Brake cincinnati 12', 100 Ton
Press Brake rg80 80 ton Amada

Roll Forming Bending

Roll Former 24'
2 each Pines Bender — tube capacity to 6" dia
2 each Wallace Bender- pipe capacity to 8" dia



METAL FORMING
FABRICATION
TOOLING
ASSEMBLY



Our state-of-the-art 100,000 sq. ft. facility allows us the in-house space to produce precision workmanship.

Phone: (951) 443-0911

Fax: (951) 443-0917

Web: stretchformingcorp.com

E-mail: info@stretchformingcorp.com

SFC
STRETCH FORMING CORPORATION

804 S. Redlands Ave., Perris, California 92570